

# THE HILLS CLUB

LANDSCAPE AND PUBLIC DOMAIN CONCEPT

2 AUGUST 2022

PREPARED BY : SITE IMAGE

FOR: ARDEN CLUBS / THE HILLS CLUB

ARCHITECT: ALTIS





# Landscape Masterplan - 'Ground' Floor





# Landscape Masterplan





Landscape Open Space Key Features



A. Two cross site walkways through site, to north & south



B. Breakout spaces with outdoor furniture and seating edges



C. Secure communal open space as club / residential interface



D. Club levels provide activation of open space



E. Adjoining Council Park



F. Colourful trees and seating along through site link



G. 'Public' park activating seating nodes and building entries



H. Residential garden interface with paths / lawns of open



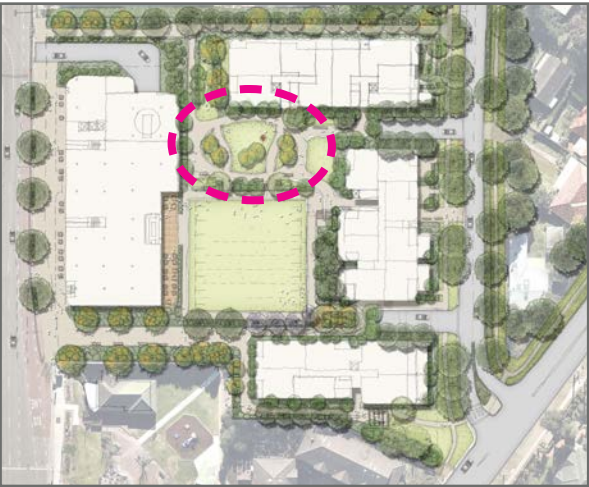
I. Quality landscaped streetfront to residential frontage



J. Podium bowling green provides green focus / active space



# Common Open Space



The oval shaped park in the centre of the site provides a visual focus for overlooking buildings, and an attractive passive recreation area with extensive seating, and is visible from both street frontages. Lush perimeter gardens provide privacy and feature gardens to adjacent residential apartments, and greening of the views around the park space. A feature sculpture will provide detail and identity to the space, potentially referencing the heritage of the site and locality.



- Perimeter gardens to residential provide greening to edge of park
- Sculpture as focal element in park can reference club or locality history
- Mounding of lawns provides interest, and soil depth for tree planting
- Broad lawns provide passive recreation and for informal play
- Paths provide loop walks and circulation to buildings and external links
- Multi level Bowling Greens with club interface and perimeter greening

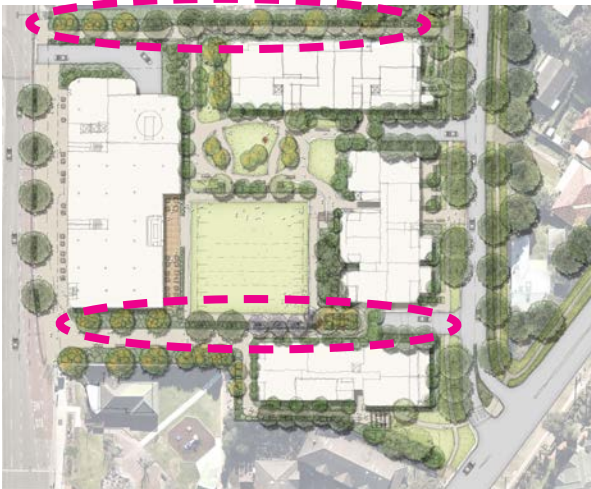
Precinct plan



Design Imagery



Open Space Link



The cross site link is created as a linear open cross site path route, with alternative path link path for movement to the south of residential building D. The permeable path and substantial deep soil garden areas support tall canopy trees to create shade and maximise the benefit of available soil, and recharge of water table. A series of pergola and seatings nodes allows for enjoyment of residents and the public. Landscape identity is created with canopy colourful flowering trees. Buffer planting is proposed to the adjacent Council park.

Precinct plan



Cross site pathway link

Common Open Space

Screen planting to residential edge

Bowling Green

Cross site pathway link

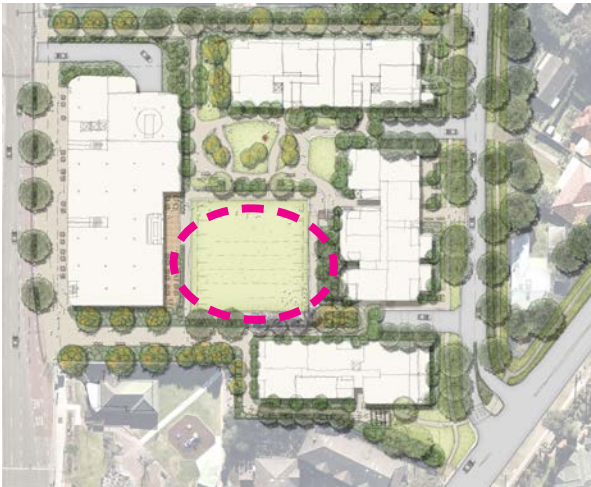
Feature flowering trees to reinforce and as feature to cross site link



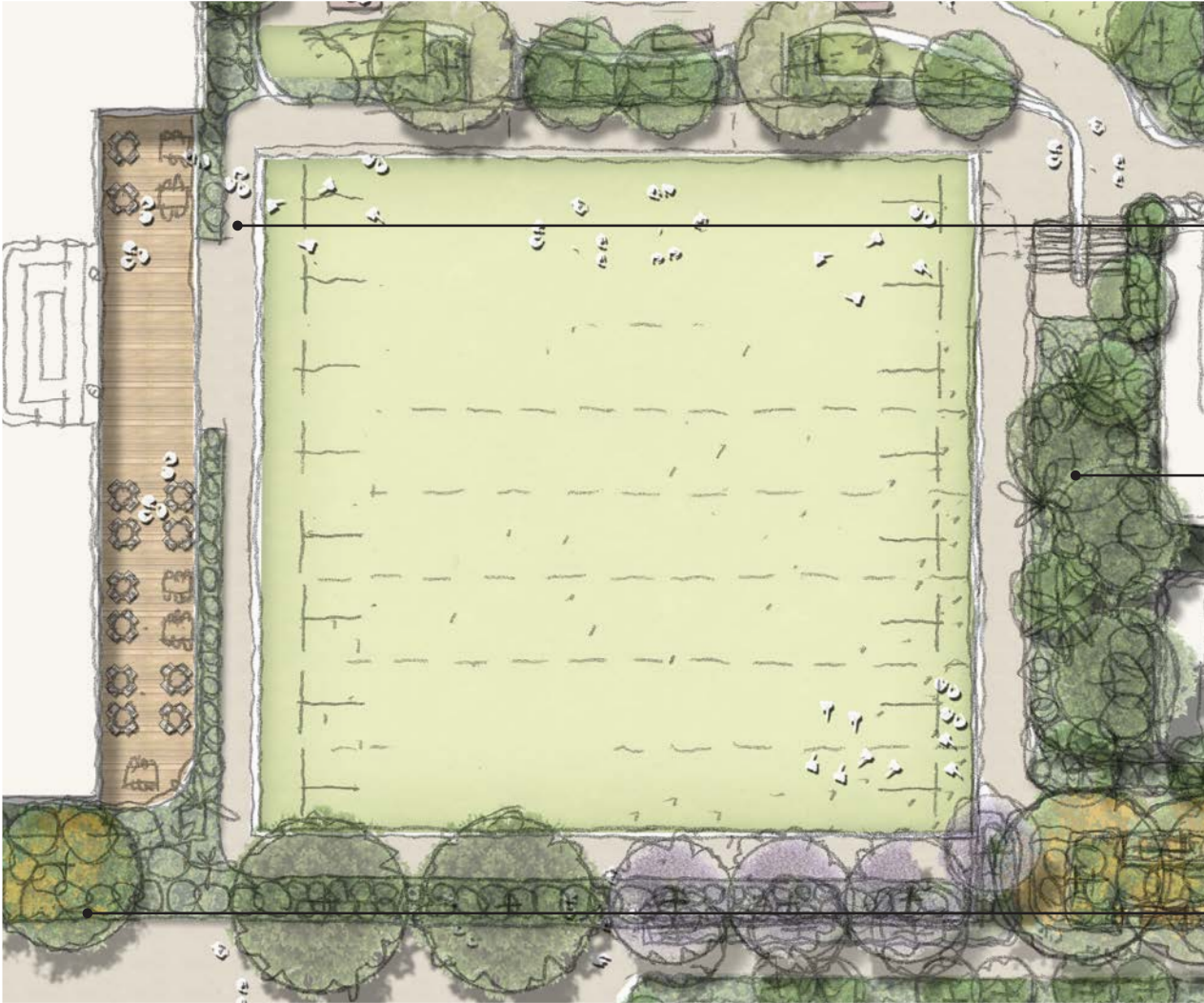
Design Imagery



# Lawn Bowling Greens



The innovative 2-storey bowling greens allow for a highly visible upper level lawn, and an all weather day /night bowling green to the lower level, both with artificial lawn. The terraced amphitheatre style seating to the level change up to the adjacent park area is to provide for event staging, as well as general comfortable passive seating. The upper and lower club levels enjoy views and interface with the bowling greens.



Terraced / amphitheatre style seating flanked by landscape

Buffer planting to residential frontage

Club terraces and indoor areas overlooking bowling greens on both levels



Precinct plan

Design Imagery



# Jenner Street Residential Frontage



The street trees and trees along the residential garden frontage together provide visual screening and greening of the frontage. High quality boundary planting and fencing / courtyard walls are to provide residential detail and identity to the building and courtyard entries.



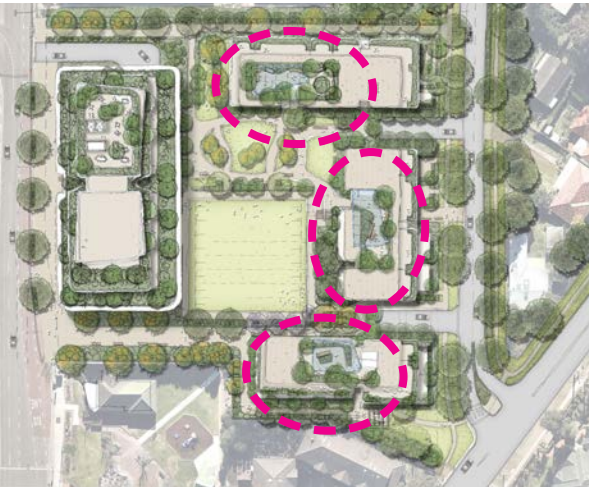
Precinct plan



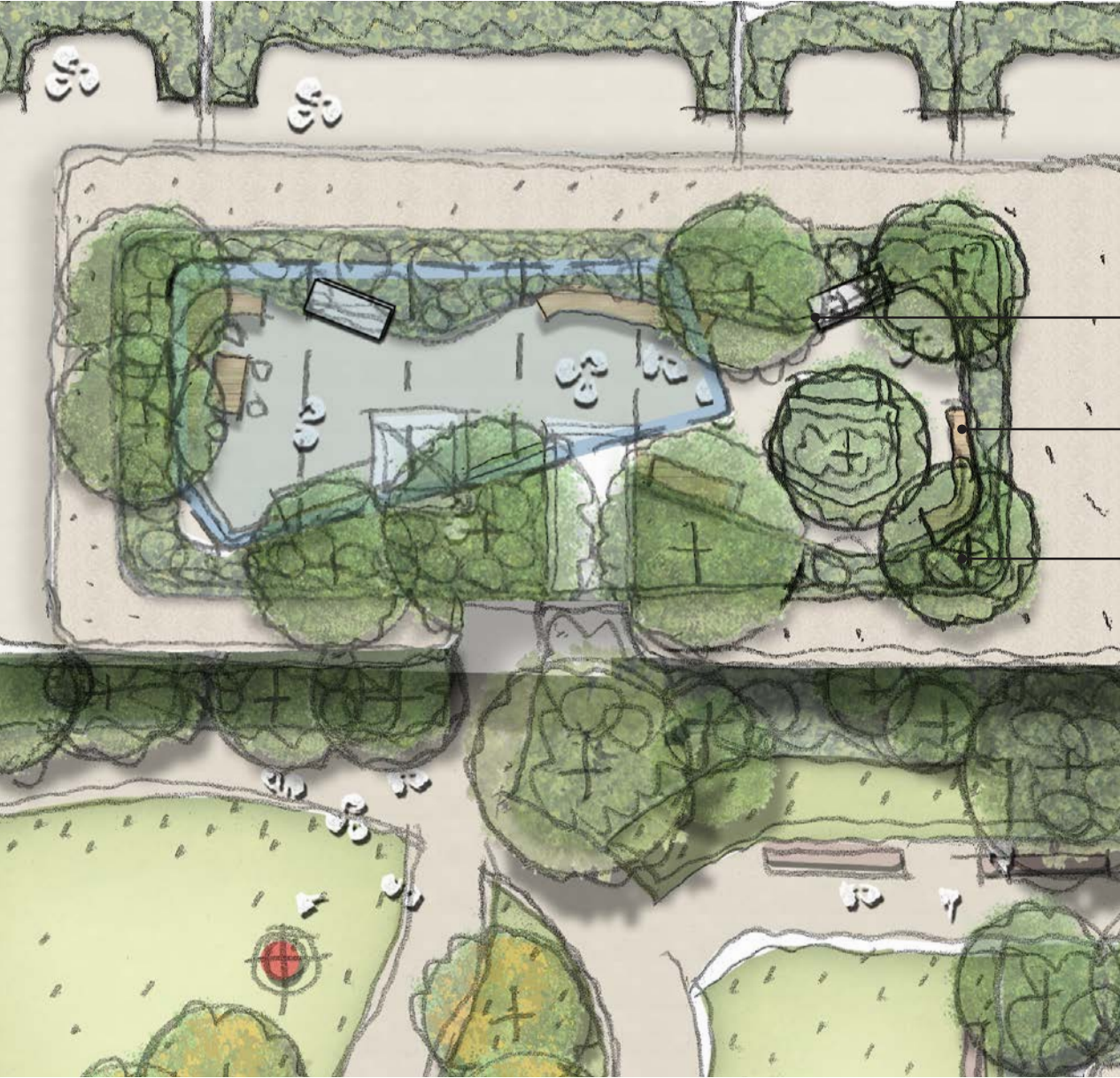
Design Imagery



Residential Rooftop Gardens



Creative design of seating alcoves provides a range of comfortable singular and group seating, from lounge type fixtures to tables and chairs. Seating is suitably provided adjacent community gardens, barbeque / outdoor seating areas, family and play areas, etc.



- Barbeque area with tables, chairs and benches
- Range of seating alcoves and opportunities next to community garden planters
- Lush green edge and small and medium sized trees providing shade / greening

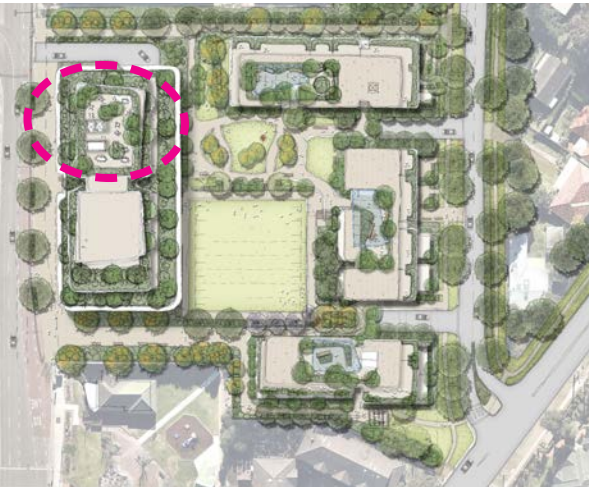
Precinct plan



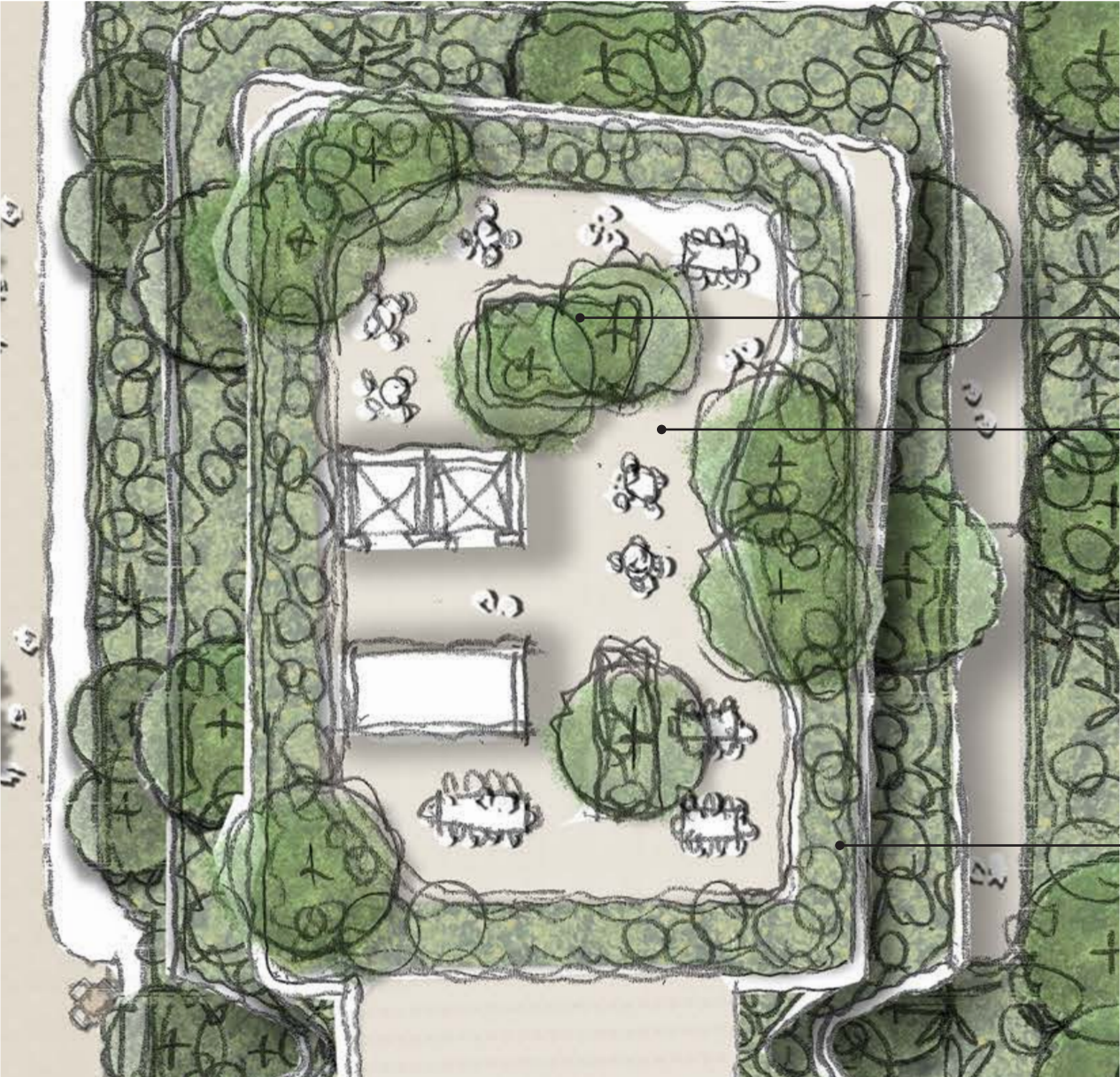
Design Imagery



Building A Rooftop Terrace



The elevation of the rooftop terrace will afford panoramic views. The gardens divide up the large terrace into a series of areas that will create numerous destination seating and gathering areas.



Island planters divide terrace space into range of smaller areas

Tables and chairs provide flexible use for families, individuals or groups

Lush green edge and small and medium sized trees providing shade / greening

Precinct plan



Design Imagery



# Tree Planting Indicative Species

Detail planting design is yet to commence, but concept plans are showing indicative screening and accent, canopy and feature trees across the site to create a suitable buffer to neighbouring properties, a high quality streetscape, and attractive and seasonal trees for the public access ‘park’ area and cross site link. Further variety will be provided, with the trees below showing the character of different trees for different outcomes as listed below. Tree species selections will be workshopped with Council to ensure suitability to create a suitable ecology and contribution to the local environment and landscape identity of The Hills.

## ACCENT TREES FOR COLOUR AND AS FEATURES



Jacaranda



Chinese Tallow - *Sapium sebiferum*



Crepe Myrtle - *Lagerstroemia indica*



*Pyrus calleryana* - Callery Pear



*Ginkgo biloba* - Ginkgo, or *Fraxinus* / Robinia

## SCREENING TREES FOR BOUNDARIES AND BUILDING SETTING



Magnolia ‘Exmouth’



Weeping Lilly Pilly - *Waterhousia floribunda*



Eumundi Quandong *Eleocarpus Eumundii*



Blueberry Ash - *Elarocarpus-reticulatus-Prima Donna*



Lilly Pilly - *Acmena smithii*

## CANOPY TREES FOR STREETS AND SHADING



Chinese Elm -- *Ulmus parvifolia*



Japanese Zelkova - *Zelkova serrata*



Lemon Scented Gum - *Corymbia citriodora*



*Platanus acerifolia* - Plane Tree



Tuckeroo- *Cupaniopsis*



# Landscape Masterplan

